

# YWD Watershed Fall Line Map Update



**Legend**

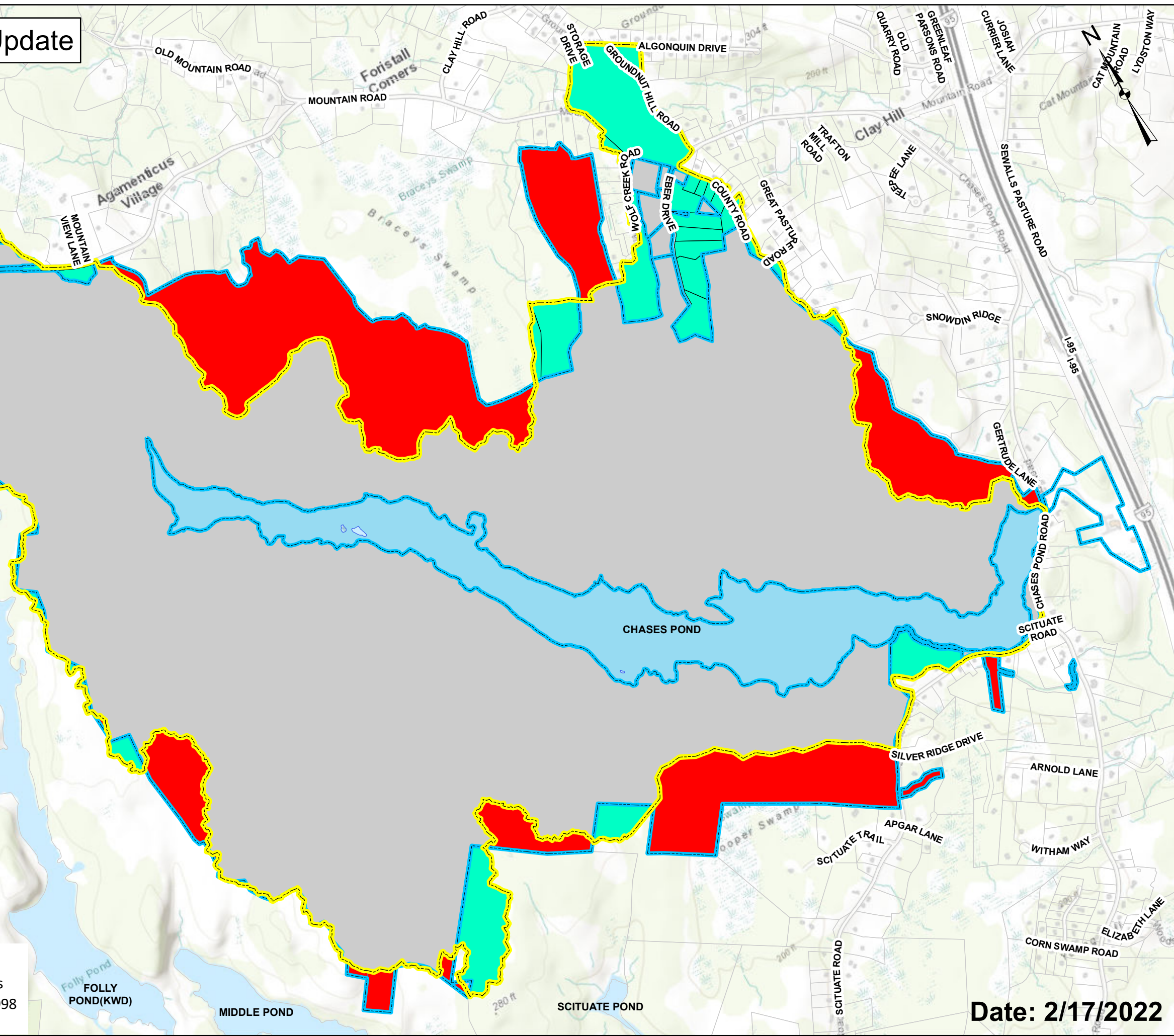
- Watershed Fall Line - WP 1,877 AC
- YWD Property Line
- Ownership Outside WS Fall Line 295 AC
- Ownership Inside WS Fall Line 1,521 AC
- Non Ownership Inside WS Fall Line 174 AC

**YWD Ponds**

- CHASES POND 171 AC
- WELCHS POND 11 AC

**Watershed Update**

Total acres inside the updated Watershed Fall Line: 1,877 Acres  
 Total acres owned by the York Water District including ponds: 1,998  
 Original acreage of the first Watershed Fall Line: 2090 Acres



**Date: 2/17/2022**