



### Trustees

Richard E. Boston, President  
Russell A. Peterson, Treasurer  
Karen Arsenault, Clerk  
Stephen C. Rendall Jr, Trustee  
Richard Leigh, Trustee

### Administration

Donald D. Neumann Jr., Superintendent  
Patrick M. Desrosiers, Financial Manager  
Noah Emery, Treatment Plant Manager  
Zachariah Mein, Resource Protection Mgr.

86 Woodbridge Road  
York, Maine 03909  
Telephone: (207) 363-2265  
Fax: (207) 363-7338  
[www.yorkwaterdistrict.org](http://www.yorkwaterdistrict.org)

December 18, 2023

## York Water District is requesting your help!

The water crisis in Flint, MI was a human-made disaster that exposed thousands of residents to lead and other contaminants. As a result, The United States Environmental Protection Agency has revised the Drinking Water Lead and Copper Rule. Part of the revisions to this rule require utilities to develop and maintain a water service line inventory by October 16, 2024. This includes the portion owned by York Water District and the portion from the street into the home which is owned by the property owner.

We are very fortunate that our staff has excavated countless service lines here in York and to date a lead service line has *never* been encountered. On occasion we may find a galvanized water service pipe on the homeowner's portion. In this case, our practice is to inform the property owner that they should consider replacing their galvanized water service pipe to reduce any potential exposure.

**We are requesting your help to confirm that your water service line is not a lead service line. This can be achieved one of two ways:**

1. Call 207-363-2265 to schedule an appointment for a District employee to perform an on-site inspection.
2. Submit your name and property address along with pictures of your water service connection and email it to the district at [nolead@yorkwaterdistrict.org](mailto:nolead@yorkwaterdistrict.org). In addition to the pictures, please try to identify your water service pipe material using the procedures on the attached guide.

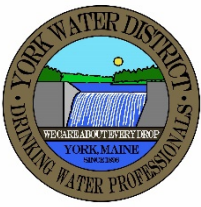
If you have questions about this process, please do not hesitate to contact us. With your help we will be able to identify any potential lead service lines and develop a strategy for the removal, keeping York Water District lead free.

For your participation (either by scheduling an appointment or your submittal of pictures), York Water District will be raffling off an Apple Watch. The first 1,000 customers that comply will be entered into a raffle. A drawing will be held at a future trustee meeting (date to be determined). Employees, trustees, or family members of staff will not be eligible.

Our friends at the District of Columbia Water & Sewer Authority in Washington D.C. designed the attached "Water Service Pipe Material Identification" document. They have given York Water District permission to share this with our customers. This information will help you to locate, identify and capture pictures of your service line.

Thank you,

York Water District Staff



# Water Service Pipe Material Identification

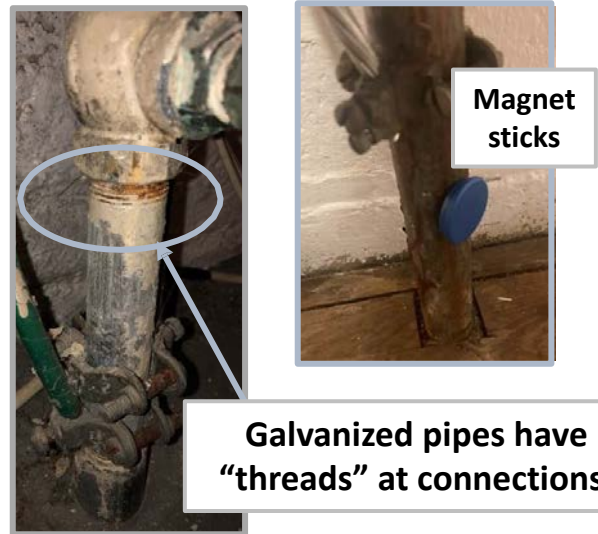
	Lead	Galvanized Iron	Copper	Brass
<b>Outer Appearance</b>	Dull gray, bendable; Often curves between wall/floor and valve	Dark gray or black; Straight rigid pipe	Brown; Can have green corrosion spots	Brown; Can have green corrosion spots
<b>Threads at connections</b>	None	Yes	None	Yes
<b>Scratch Test (coin or key)</b>	Shiny silver	Hard to scratch, remains gray	Copper, like a penny	Gold color
<b>Magnet Test</b>	Does not stick	Magnet WILL stick	Does not stick	Does not stick

## Lead



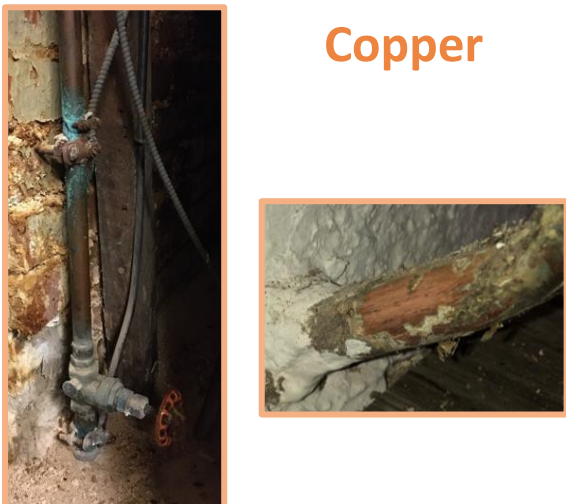
Lead pipes **widen** at base and often form a **"bulb."**

## Galvanized Iron



Galvanized pipes have **"threads"** at connections.

## Copper



## Brass



Brass has **"threads"**.



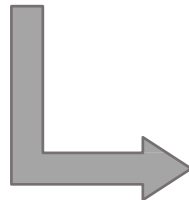
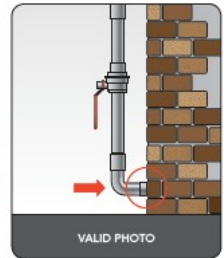
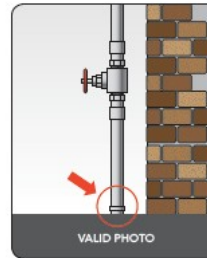
# Instructions to Provide Water Pipe Material Information

## Step 1

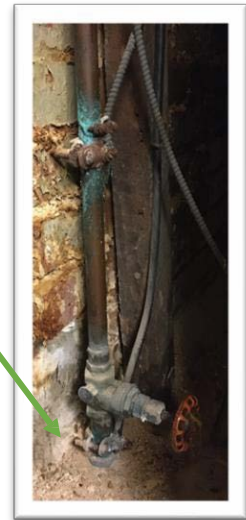
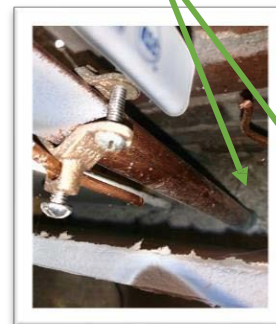
Locate the water service line entering the building. You need to see the pipe where it comes through the floor or wall. In the basement or lowest floor, or whole-house water shut-off valve nearby.



Cannot see where pipe comes through - try to pull back insulation and use phone camera to view pipe at breakthrough.



Pipe coming through floor



## Step 2

### Use Pipe Material Identification Sheet

- Look for threads at connections.
- Scratch pipe with a coin or key to reveal the metal. You may need to scratch through corrosion or paint. Lead is soft and scratches easily.
- See if a kitchen magnet sticks to the pipe. A magnet will not stick to a lead pipe.



## Step 3

Take three (3) photos.

1. Pipe coming through wall or floor.
2. Closer view of pipe with scratch.
3. Further view of pipe that includes shut off valve.



## Step 4

Send photos to [nolead@yorkwaterdistrict.org](mailto:nolead@yorkwaterdistrict.org).