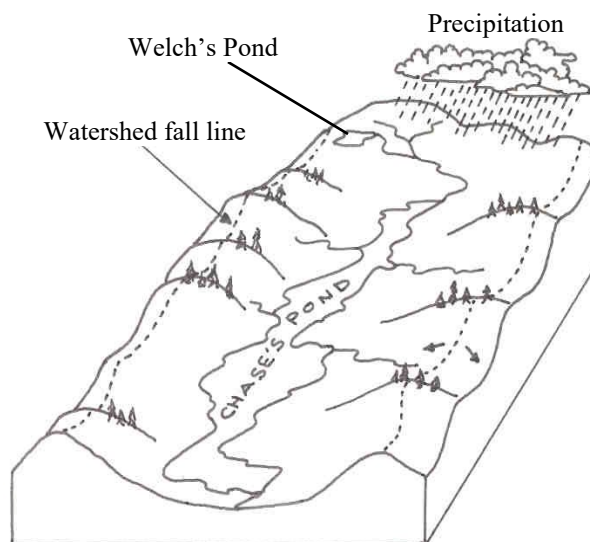


2022 RULES OF USE

- 4 WHEEL VEHICLES (TRUCKS, JEEPS ETC.) ARE PROHIBITED.
- NO MOTORCYCLES, DIRT BIKES OR MOTOR DRIVEN CYCLES.
- ATV'S BY PERMIT ONLY.
- NO GASOLINE POWERED ENGINES ALLOWED ON THE PONDS AT ANYTIME.
- STAY ON MARKED TRAILS.
- STAY OUT OF CLOSED AREAS.
- THE MAKING OF NEW TRAILS IS STRICTLY PROHIBITED.
- NO BOATING , SWIMMING, OR CAMPING
- NO FISHING, OPEN WATER OR ICE FISHING.
- NO FIRES OF ANY KIND AT ANY TIME.
- NO TREE CUTTING.
- NO LITTERING, CARRY OUT WHAT YOU CARRY IN.
- THE MAXIMUM SPEED ON ALL TRAILS IS 15M.P.H.
- PET OWNERS MUST FOLLOW THE TOWN OF YORK'S ANIMAL CONTROL ORDINANCES.
- PET OWNERS MUST ALSO FOLLOW THE YORK & KITTERY WATER DISTRICT PUBLIC WATER SUPPLY ANIMAL CONTROL POLICY. PLEASE PICK UP YOUR PETS WASTE.
- NO TREE STANDS.
- HUNTING IS ALLOWED.
- OBEY ALL SIGNS.
- NO ORGANIZED GROUP ACTIVITIES.
- NO ROCK CLIMBING, RAPPELLING.
- THE POSSESSION OR CONSUMPTION OF ALCOHOL IS PROHIBITED.
- NO RECREATIONAL USES ON THE PONDS AT ANY TIME, OPEN WATER OR ICE.

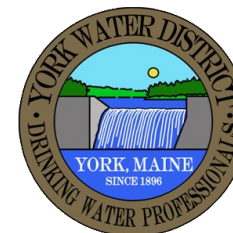
What is a watershed?

A watershed is the area of land where all of the water that is under it or drains off of it goes into the same place, in this case **CHASE'S POND**.



The protection of Public Water Supplies will take on more significance as the Environmental Protection Agency and State Drinking Water Program's rules will be requiring the Districts to do more testing and reporting on our raw water quality. Our challenge will be to continue to allow limited recreational use of this protected area without this use interfering with our goal to enhance the raw water quality. The Districts intent is to continue to allow limited recreational use, to acquire as much of the watershed land as possible, to continue the source water monitoring program and to increase patrolling of this region.

YORK WATER DISTRICT KITTERY WATER DISTRICT PUBLIC WATER SUPPLY WATERSHED PROTECTION AREA RULES OF USE 2022



YORK WATER DISTRICT
86 WOODBRIDGE RD
YORK, MAINE 03909
363-2265
GARY STEVENS
ASST. SUPERINTENDENT
451-8107
EMAIL
watershed@yorkwaterdistrict.org



YORK POLICE DEPT
9 HANNAFORD DR
YORK, MAINE 03909
363-4444
www.yorkpolice.org



KITTERY WATER DISTRICT
17 STATE RD
KITTERY, MAINE 03904
439-1128
www.kitterywater.org

www.yorkwaterdistrict.org

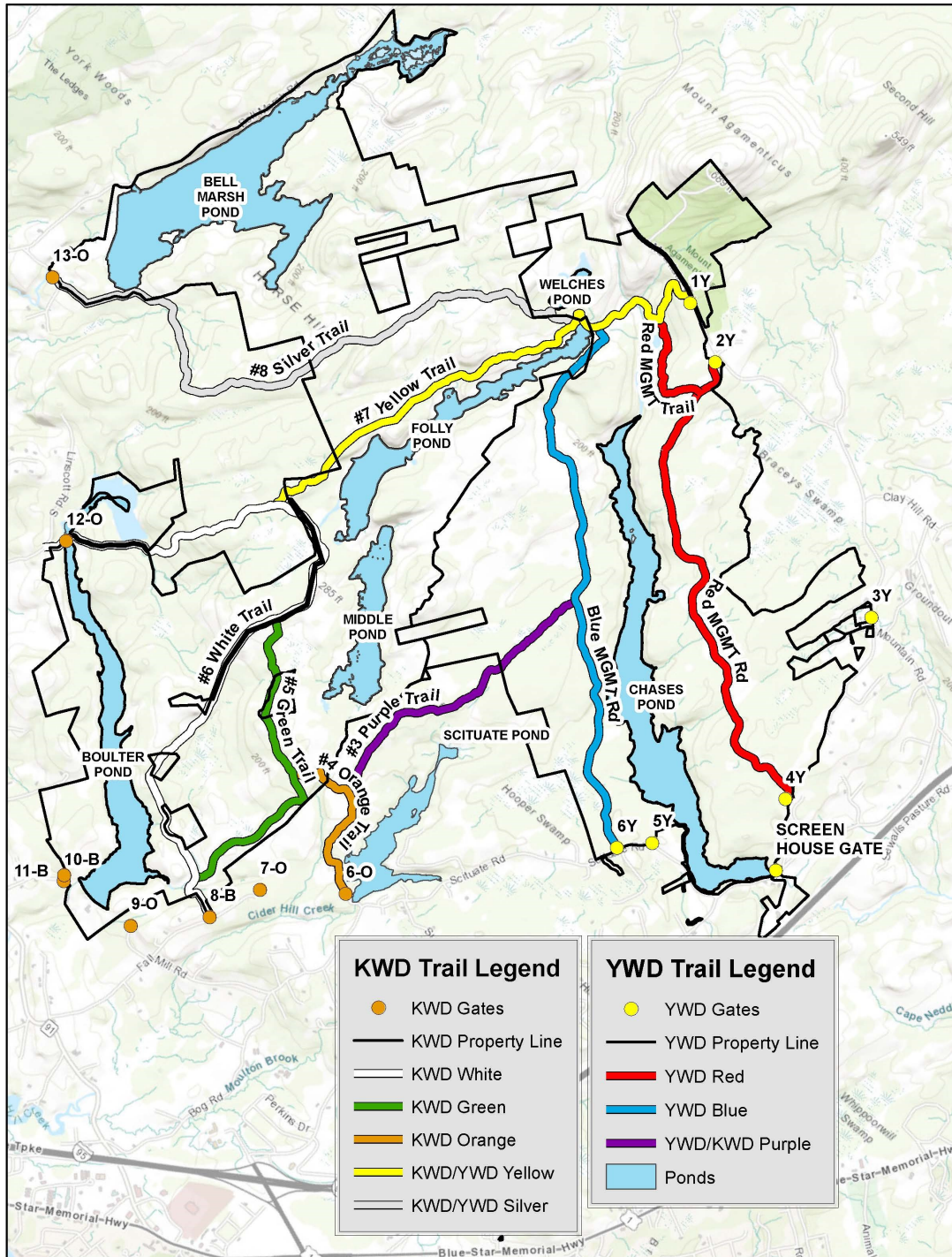
YORK WATER DISTRICT
RESOURCE PROTECTION OFFICE
1-207-363-2265 FAX 207-351-8522

PET OWNERS

All dogs **MUST** be on a leash at all times.
You **MUST** carry and use a waste disposal bag for the purpose of picking up and removing pet waste from the property.

**VIOLATIONS WILL
RESULT IN SUMMONS.**

NO MATTER WHERE YOU LIVE...YOU LIVE IN A WATERSHED



Recreational uses are prohibited on these ponds. The following ponds are public water supplies, they provide drinking water to thousands of people in York, Kittery, and Eliot. Please help us protect this valuable resource

CHASES POND
WELCHES POND
FOLLY POND
MIDDLE POND
BELL MARSH RESERVOIR
BOULTER POND

**RECREATIONAL USES
ARE
PROHIBITED ON ALL OF
THESE PONDS**

**The property owned by the
York and Kittery Water
Districts surrounding these
Ponds are
PRIVATE PROPERTY.**

**It is a privilege to pass
across this private land.
This privilege can be re-
voked at any time and for
any reason by the York
Water and/or Kittery Water
Districts.**

**WHEN PARKING YOUR VEHICLE
PLEASE KEEP VALUABLES OUT
OF SITE, AND DOORS LOCKED
FOR YOUR PROTECTION**

**THIS AREA IS REGULARLY PATROLLED
BY THE YORK POLICE DEPT.
IF YOU ARE ON AN ATV AND YOU DO NOT HAVE A PERMIT YOU
WILL BE ASKED TO LEAVE!**

WATERSHED TRAIL MAP